

# CORPORATE PRESENTATION



# CONTENTS

- **Overview**
- **Our Vision & Mission**
- **Our Core values**
- **Our Leadership Team**
- **Our Organizational Chart**
- **Our Certifications & Compliances**
- **Our Quality Management System**
- **Our EHS Management System**
- **Our Commitments**

"Acme creates inspiring interiors that blends the best of creativity, craftsmanship and flawless execution to help you Discover Perfection in your everydayworkspaces."

discover perfection

# Overview

In the year 1998-1999 an inspiration was born, an inspiration to discover perfection, resulting in the birth of Acme Interiors. We have Successfully pursued our vision with astounding Courage and determination. Today we are a well-acclaimed PAN – India interior contracting firm with the finest credentials to execute any project to perfection.

Our multi-disciplinary offerings span across:

- Civil & Interior Contracting Works
- General Contracting (GC) Services or (Turnkey interior contracting) across Civil & Interiors, HVAC, Electrical, FAPA, Security, Networking, and more
- Turnkey Design-Build Services

We strive to turn your vision into reality through meticulous planning, bespoke design and flawless execution across all our fore mentioned services.

We offer our clients' the highest standards of skill and experience combined with proven local knowledge. Drawing on the expertise of an integrated team of specialists, we have executed exemplary projects that have met and even exceed our clients' expectations. Our knowledge and experience base make us exceptional and allow us to undertake a wide spectrum of projects.



# Your Dreams into Reality



# OUR VISION & MISSION

**Our Vision is to seamlessly execute and deliver inspiring workspace designs that infuse cost efficiency, top-quality, on budget and time-bound projects into masterpieces that stand out.**

**Our Mission is to delight our clients with our strong execution capability backed by our domain know-how and a lasting commitment to client needs. Our commitment to trust and ethical practices propels our core Mission even further with every project we undertake.**

# CORE VALUES

## QUALITY

*We strive for excellence.*

## CLIENT SATISFACTION

*We give our Best to Clients.*

## COMMITMENT

*We keep our word.*

## INNOVATION

*We believe there is always place for improvement and change.*

## INTEGRITY

*We do the right Thing.*

## RESPECT

*We value our people.*

## RESPONSIBLE

*We value our environment.*



## OUR LEADERSHIP TEAM



### **Mr. K. Ramchandran - Chairman**

(An Inspiring Leader with four decades of **leadership** Experience)



### **Mr. Raj Chawla - Director & CEO**

(A visionary business leader and change management expert)



### **Mrs. Anjali Chawla - Director (Finance & Commercial)**

(An inspiring Leader with Strong Prudence & Fundamentals in Finance)

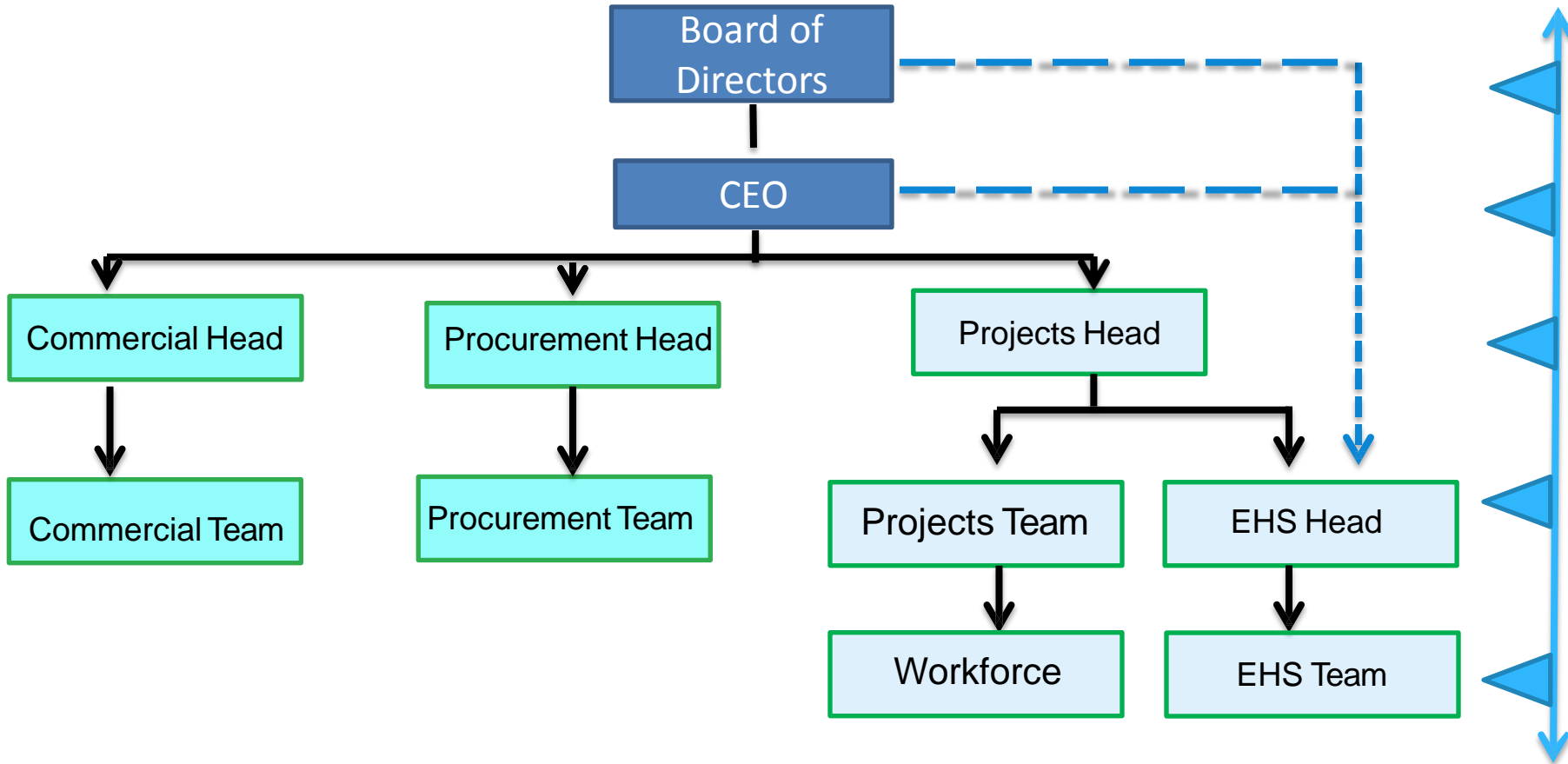


### **Mr. Anuj Ramchandran - Director (Projects & Design)**

(Our Creative Guru & Design Expert with Strong Project Management capabilities)



# Escalation Matrix



▲ : Levels of Escalation

# Certifications & Compliance

We are committed to provide our esteemed clients with the best services and standards, we have established procedures that conform and stand certified for the following standards :

## QMS: ISO 9001:2008

Our principal objective is to provide our clients with quality, innovative and cost effective Interior Contracting, Interior Designing and Project Management Services for their projects. Our internal quality control and monitoring systems & procedures have been established based on ISO guidelines.

At Acme Interiors Pvt. Ltd. the core management team is responsible for the quality of the work performed by our own forces, subcontractors and suppliers alike. Our team understands that successful implementation of the quality control policies and procedures lies not only in the capabilities and experience of the Management Team, the suppliers, deployed workforce and other team members, but also in every stakeholder's dedicated efforts to achieve a common goal i.e. to produce quality lasting products/services.

It is our policy to ensure that all components of our scope of work are performed in accordance with the requirements of the clients Contract Specifications, the approved drawings and the implementation of the Quality Plan.



# Certifications & Compliance

## **EMS: ISO: 14001:2004**

Acme Interiors Pvt. Ltd. is committed to pollution prevention and environmental protection at its various offices and sites. We aim to achieve the highest standards of environmental performance in the interest of all our stakeholders, whether they are our Clients, employees, the general public or the natural environment.

We are committed to complying with all environmental legislation and regulations that apply to the industry and we make every effort to comply and meet all such requirements. An Environmental Management System has appropriately been prepared and implemented including policies, objectives and targets that through a continuous program, helps ensure that the services provided by our company do not in any way compromise or damage the environment.

We examine and evaluate the environmental implications of any processes, products, and technologies and also their overall energy usage and only suitable ones are utilized for the projects. Waste avoidance and reduction and energy conservation program has been vigorously pursued and implemented.

We will continue to strive for ever- improving environmental performance aimed to Protect the environment for our Employees, Clients and all our other stakeholders.

## **OHSAS: ISO: 18001:2007**

It is our top priority to ensure health and safety of our employees and teams at our workplace or on site. With development and implementation of occupational health and safety framework we have been able to effectively balance the risks, as well as defend and protect our workforce, employees and other stakeholders.

# Quality Management System

## Methodology



## Few Guidelines & Checkpoints

- Ensuring that all requirements have been documented within the management system in the appropriate location in terms of defined specific system requirements
- Confirming that employees receive applicable training in the quality system requirements
- Outline performance processes, where applicable, to the quality system requirements
- Produce records or evidence that system requirements have been met
- Measure, monitor and report the extent of compliance with these performance procedures
- Continually monitor and analyze changes to the requirements and confirm that all changes are reflected in changes to the specific requirements when necessary
- Execute the audit and analyze the system processes and correct them when necessary
- Include processes that will help continually improve the quality system.





## MANAGEMENT SYSTEM

Our Environment, Health and Safety Management System is a set of policies, processes and requirements that are guided to achieve perfection at every aspect of our work.

We implement sound Environment, Health and Safety management systems that are based on suitable and sufficient risk assessments in order to continuously achieve and maintain our mission for zero (injuries, incidents, accidents, unsafe behavior) and no compromise on safety.

mission  
**zero**



**zero** injuries  
to our people, contractors & visitors

**zero** tolerance  
of unsafe behaviour & acts

**zero** compromise  
on safety

# EHS Management System

Our EHS Management System defines the elements by which we conduct our operations in order to protect people, property and the environment in which we work and live.

The EHS Management System model comprises of Ten interrelated elements :

- Commitment and Leadership
- Policies and Objectives
- Organization, Resources and Documentation
- Training and Support
- Risk Evaluation and Management
- Planning
- Implementation, Recording and Monitoring
- Audit Procedures
- Corrective & Preventive Action
- Management Review Procedures

# EHS Management System



# Our Commitments

We, at Acme Interiors, pride ourselves in providing exceptional services tailor made for each client's individual requirements.

Our commitments include :

- ✓ Good Work Practices
- ✓ Regular Housekeeping
- ✓ Debris Management
- ✓ Pollution Management
- ✓ Compliance
- ✓ Continuous Improvement
- ✓ Involvement and Communication
- ✓ & many more.....



*Thank you for your valued time !*

**Head Office: #21/22, 2<sup>nd</sup> & 3<sup>rd</sup> Floor, Above SBI Bank, Horamavu Main Road, Bangalore, India**

---

**GURGAON**

**NEWDELHI**

**NOIDA**

**CHENNAI**

**HYDERABAD**